



SHAW'S

WIRE ROPES

EST 1909

FORESTRY CATALOGUE



2013/2014

0800 4 SHAWS



Introduction	
Wire Rope	2
Logging Rope Introduction	2
Logging Rope Performance Information	3
Rope End Terminations & Lubrication	4
Logging Rope User Information	5
Blocks	6
Block Components	6
Tail & Scabbing Blocks	7
Rider, Fall & Rigg Up Blocks	8
Maintenance	9
Rigging Equipment	10
Rigging	10
Chain	14
Rigging Accessories	15
Shackles	16
Loggers Equipment	17
Logging Equipment	17
Personal Protective Equipment	19
Boots	20
Chainsaw Products	22
Transport	27
Chain & Lever Blocks	28
Skidder Chains	29
Eco-Tracks	30
Safety Signs	32
ACME Carriages	34
Fortronics Electronic Chokers	36

The relationship between Shaw's Wire Ropes and NZ forestry extends back to the 19th century. We have proudly supplied NZ loggers since steam powered the country's first haulers, when towers were timber, and locomotives carted huge native logs through our forests.

Today we remain 100% dedicated to providing kiwi logging contractors with the equipment and practical advice to get the job done. After 100 years we understand the challenges involved in logging and strive to deliver robust solutions, there when you need them.

New Zealand's Logging Supply Specialist:

- Over 100 years of logging supply expertise
- NZ's largest inventory of logging rope, blocks and rigging
- Robust and proven products
- 100% dedication to outstanding service & value
- Delivery NZ wide.

This Forestry Catalogue aims to provide useful product information, for you and your crew. Please note that all specifications in this catalogue are offered as an indicative guide only, and may be subject to change.

If you require more detailed information, give the team a call on 0800 4 SHAWS.

Keep on breaking out the big wood!!

The Team at Shaw's Wire Ropes.



"Excellence is not a skill. It is an attitude"

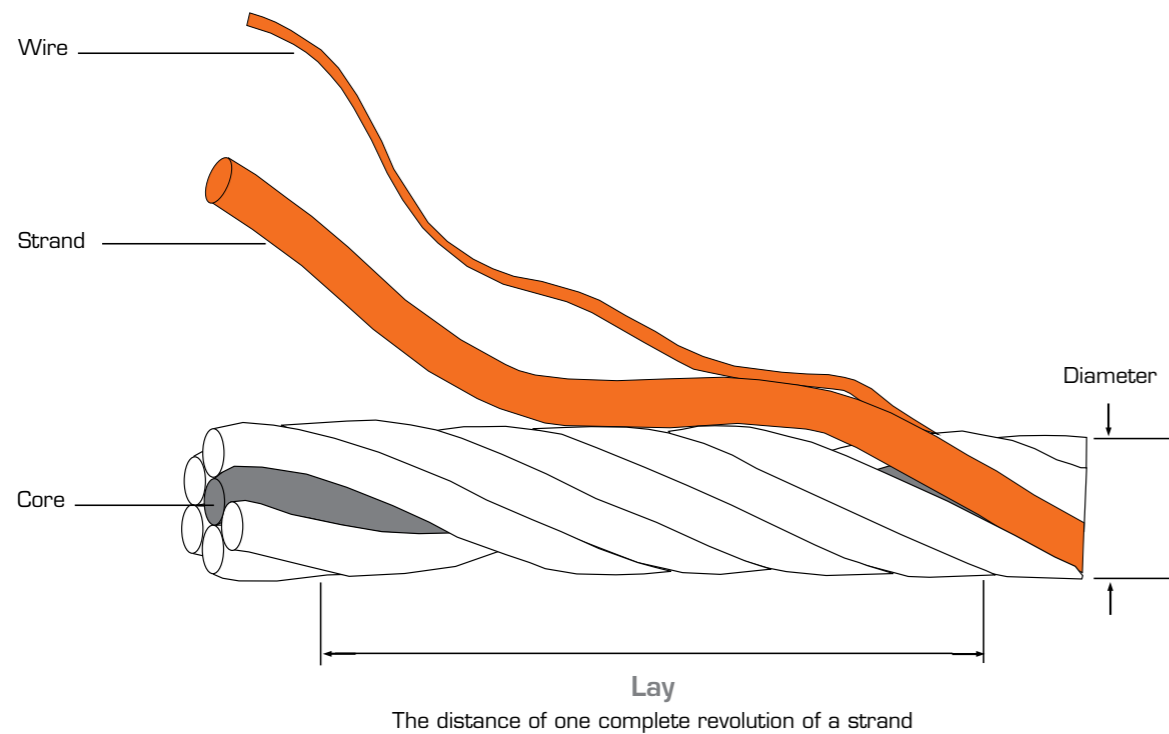
- Ralph Marston



Logging Rope Introduction

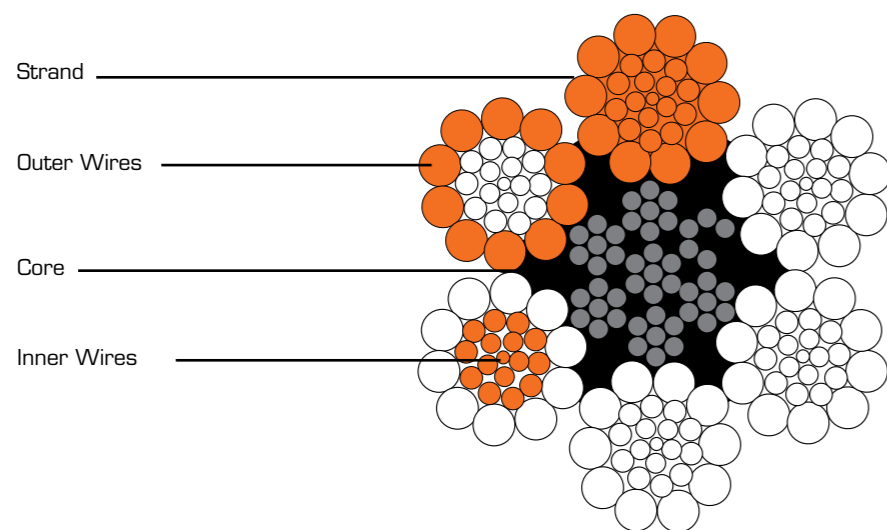
Rope Construction

Rope is made of individual **wires** twisted into **strands**. These preformed strands are then twisted around the **core** to complete the rope. The core supports and maintains the circular structure of the rope.



Rope End View

Typical Logging Rope



6 Strands x 26 Wires, around an Independent Wire Rope Core (IWRC)

Logging Rope Performance Information

Shaw's logging rope is supplied in imperial sizing, as most cable logging equipment originates from North America. Please note the "Common Application" information in the tables below is offered only as a guide. For more detailed information give our team a call on 0800 4SHAWS.

Regular Logging Rope

Rope Diameter					
Imperial (inch)	Metric (mm)	Construction	Min. Breaking Load (tonnes)	Weight per metre (Kg)	Common application
-	9.0	6x19 IWRC	5.20	0.35	Strawline
-	10.0	6x19 IWRC	6.42	0.43	Strawline
7/16	11.2	6x19 IWRC	7.77	0.54	Strawline
1/2	12.7	6x19 IWRC	10.80	0.73	Tagline
9/16	14.3	6x19 IWRC	12.60	0.88	Small Tail
5/8	16.0	6x26 IWRC	16.42	1.10	Tail + Strops
3/4	19.0	6x26 IWRC	23.15	1.55	Main + Tail + Strops
7/8	22.2	6x26 IWRC	32.22	2.13	Main + Tail + Strops
1	25.4	6x26 IWRC	43.44	2.78	Main + Sky + Guy
1 1/8	28.6	6x19 IWRC	52.56	3.52	Sky + Guy
1 1/4	31.8	6x25 IWRC	65.77	4.35	Sky + Guy
1 3/8	35.0	6x25 IWRC	78.72	5.27	Sky + Guy



Swaged Logging Rope

Rope Diameter					
Imperial (inch)	Metric (mm)	Construction	Min. Breaking Load (tonnes)	Weight per metre (Kg)	Common application
1/2	12.7	6x26 IWRC	14.48	0.88	Main + Tail
9/16	14.3	6x26 IWRC	18.33	1.07	Main + Tail
5/8	16.0	6x26 IWRC	21.72	1.30	Main + Tail
11/16	17.5	6x26 IWRC	27.15	1.55	Main + Tail
3/4	19.0	6x26 IWRC	31.31	1.82	Main + Tail + Sky
7/8	22.2	6x26 IWRC	42.62	2.75	Main + Tail + Sky
1	25.4	6x26 IWRC	55.78	3.48	Main + Sky + Guy
1 1/8	28.6	6x26 IWRC	63.94	4.30	Sky + Guy
1 1/4	31.8	6x26 IWRC	78.93	5.21	Sky + Guy



Power Swaged Logging Rope

Rope Diameter					
Imperial (inch)	Metric (mm)	Construction	Min. Breaking Load (tonnes)	Weight per metre (Kg)	Common application
1/2	12.7	6x26 IWRC	17.2	0.98	Main
9/16	14.3	6x26 IWRC	21.9	1.24	Main + Tail
5/8	16.0	6x26 IWRC	26.2	1.53	Main + Tail
11/16	17.5	6x26 IWRC	32.3	1.85	Main + Tail
3/4	19.0	6x26 IWRC	38.9	2.20	Main + Tail
7/8	22.2	6x26 IWRC	51.5	2.99	Main + Tail
1	25.4	6x26 IWRC	66.9	3.91	Main + Sky + Guy



Rope End Terminations



Hand Spliced Eye



Pressed Thimble Eye



Pressed Solid Thimble Eye



Pressed Soft Eye



Wire Rope Clips



Spelter Socket



Split Wedge Ferrules



Flemish Eye

Lubrication

Wires and strands are lubricated during manufacture to:

- Allow wires and strands to slide easily past each other
- Provide a coating on the metal surfaces and prevent corrosion.

Over time it is important to replace rope lubricant to avoid premature rope failure:

DO	DON'T
Use specialist rope penetrating lubricant	Use bar oil, or used engine oil - these contain abrasive particles.
Apply when the rope is bending (slowly!) through a sheave or drum, "opening up" the rope.	Use diesel or petrol - these solvents will flush out lubricant remaining in the rope.
Be aware that lubricant attracts abrasive particles (sand, dust, scoria etc.)	
Plan application to minimise damage.	

Logging Rope User Information

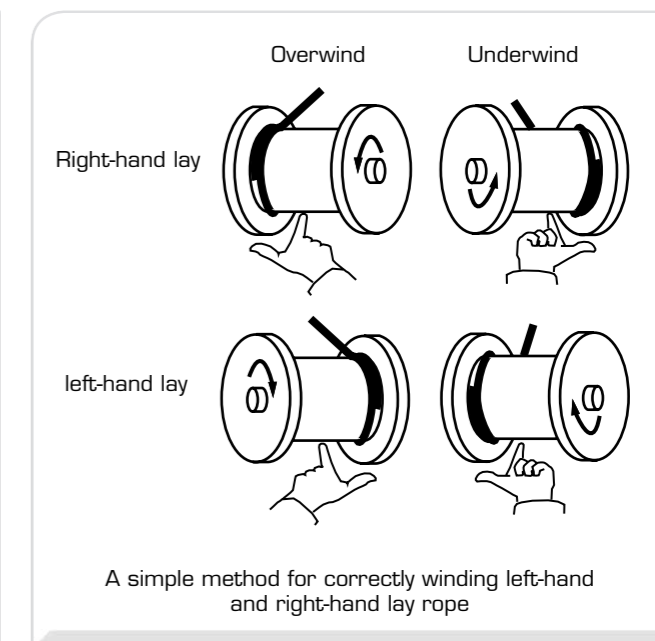
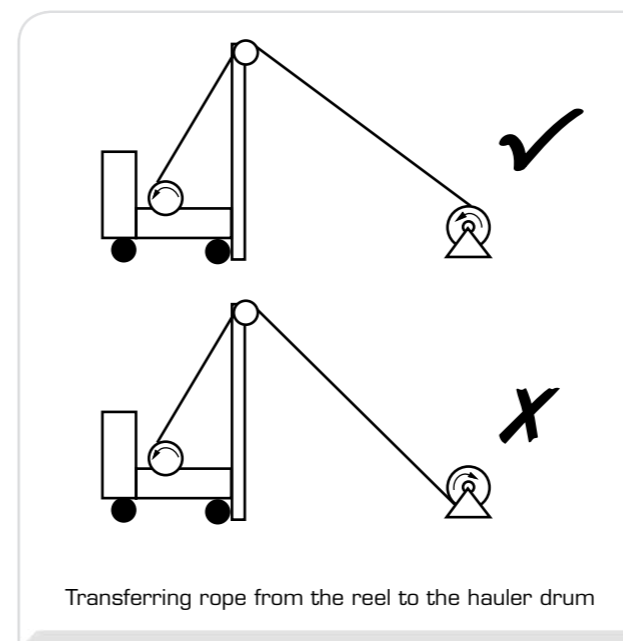
Transferring Rope

Rope arrives on site on a reel, and must be transferred across to the winch drum.

Remember:

- Brake the reel to avoid overrun
- The rope should be wound tight at the correct tension to allow even spooling on the drum
- Ensure each layer winds evenly and at equal tension. Make sure each additional layer fits tightly with the one below.
- Ensure that the rope bends in the same direction as it was stored on the reel (see the diagram below).

Top of the reel to top of the drum (common for NZ haulers).
Bottom of the reel to bottom of the drum.



Drum Capacity

Are you wondering what rope length will fit on your drum, or how capacity will change with a different diameter rope?

We can provide accurate drum capacity and operating manual information for every hauler commonly used in New Zealand logging. Give the team a call on 0800 4SHAWS.

Any Further Questions?

We can provide more detailed information on 0800 4SHAWS, or visit us online at www.wireropes.co.nz.

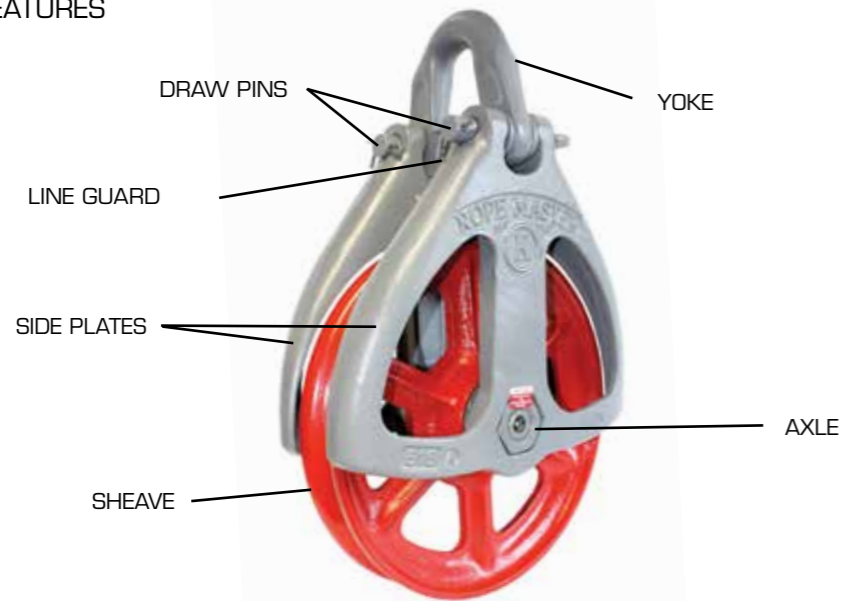
Block Components

ROPEMASTER®

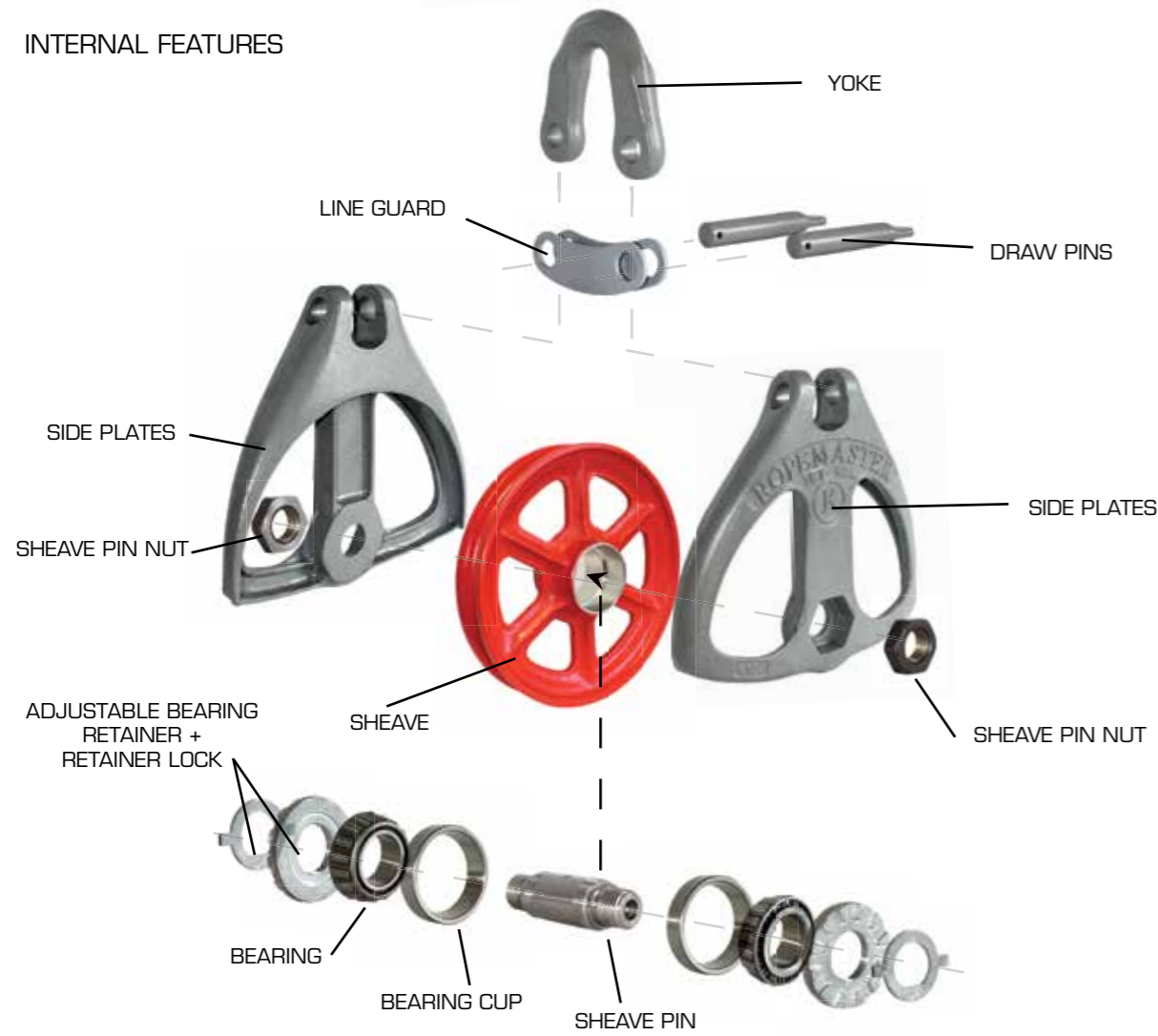
Tail and Scabbing Blocks

ROPEMASTER®

EXTERNAL FEATURES



INTERNAL FEATURES



* Shaw's stock a range of replacement parts.



108R



110R



112R



513A



515A



418

Block Name	Rope Size (inch)	Sheave Size (inch)	Safe working Load (Kg)	Weight (Kg)	Application
108R	1/2 - 5/8	8 x 1 1/2	7,257	13.6	Tail
110R	1/2 - 5/8	10 x 1 3/4	7,257	17.2	Tail
112R	1/2 - 5/8	12 x 1 3/4	7,257	21.3	Tail
513A	3/4 - 7/8	13 x 2 1/2	13,607	28.6	Tail + Rider
515A	7/8 - 1	15 x 2 1/2	13,607	33.1	Tail + Rider
418	7/8 - 1	18 x 2 1/2	15,909	53.0	Mobile Tailhold



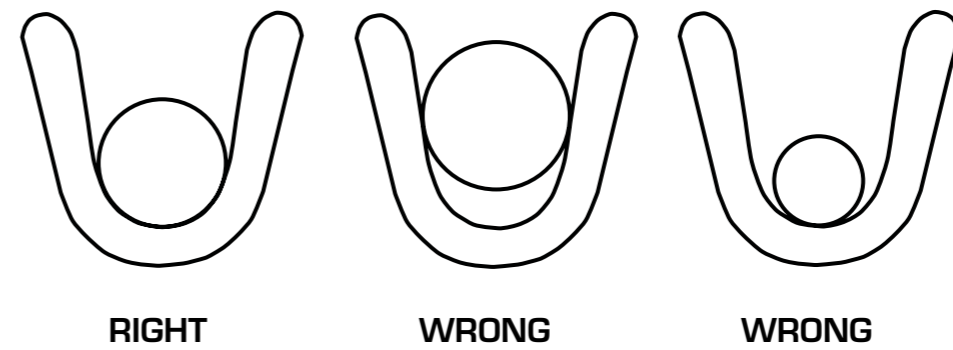
ROPEMASTER®

ROPEMASTER®

Maintenance

- Grease regularly (daily or at least weekly). We frequently see blocks damaged due to bearings running dry.
- Keep the side plates screwed tight.
- Be careful grabbing blocks with the loader grapple.

Matching Rope Diameter to Sheave Groove Size



Smash Plate

To suit 3/4", 7/8" & 1" Mainline

Rider Blocks

Block Name	Rope Size Inch	Sheave Size Inch	Weight Kg
RM 2214	1 1/8 - 1 1/4	14 X 2 1/2	58.9
RB2143	1 1/8 - 1 1/4	21	137

Fall Block

Block Name	Rope Size Inch	Sheave Size Inch	Weight Kg
FB12	7/8	12	130



Tommy Moore (or Rig Up) Blocks

Block Name	Safe Working Load	Rope Size Inch	Sheave Size Inch	Throat Width Inch	Opening Height Inch	Weight Kg
	Kg					
RM83	6,803	1/2 - 5/8	8 X 3	4 1/2	4 3/4	19.0
506	6,803	3/8 - 5/8	6 X 2	3	1 1/2	10.9
R6	7,200	3/8 - 1/2	6 X 3	4	6 1/2	13.6
R8	7,200	1/2 - 5/8	8 X 3	4 1/2	7 1/4	19.5
508	13,608	1 - 1 1/4	8 X 4 1/2	5 1/2	6	32.7

Rigging



Three Way Swivels

Size	Max Rope Size (inch)	Link Size (inch)	Weight (Kg)
Bantam	3/4	7/8	16.3
Light	1	1	22.7
Junior	1 1/4	1 3/8	45.4
Standard	1 1/2	1 1/2	64.0

Butt Swivels

Size	Link Size (inch)	Weight (Kg)
Light	1	9



Swivel Dees

Size	Ferrule Size	Rope Size (inch)	Weight (Kg)
Light	L6+L7	3/4 - 7/8	2.7
Junior	J8+J9	1 - 1 1/8	5.0
Standard	S10+S11	1 1/4 - 1 3/8	7.7



Dropline Sockets

Sizes: 5/8 - 3/4, and 3/4 - 7/8



Hammerlocks (G80)

Size (mm)	Working Load Limit (Tonnes)	G80 Chain Size (mm)	Weight (Kg)
8	2.0	7+8	0.2
10	3.2	10	0.3
13	5.3	13	0.7
16	8.0	16	1.1
20	12.5	19+20	1.9
22	15.0	22	3
26	21.2	26	4.6
32	31.5	32	8.6

Weldable Links

Size	Weight (Kg)
Bantam	1.4
Light	2.7
Junior	4.9



Buzzard Hooks

Size (inch)	Rope Size (inch)	Weight (Kg)
1 3/8	1/2	4.5
1 1/2	5/8	5.4
1 3/4	3/4	6.3
2	7/8	7.3
2	1	10



Swivel End Buzzard Hooks

Size (inch)	Rope Size (inch)	Weight (Kg)
1 3/8	1/2	5.5
1 1/2	5/8	5.5
1 3/4	3/4	7.7



McGovern Hooks

Size	Ferrule Size	Rope Size (inch)	Weight (Kg)
Dwarf	LB5	1/2, 5/8	2.7
Bantam	B5+B6	1/2, 5/8, 3/4	4.5
Light	L6+L7+L8	3/4, 7/8, 1	7.2
Junior	J7+J8+J9	1, 1 1/8	13.1
Standard	S11	1 1/8, 1 1/4, 1 3/8	17.2



Rigging Shackles

Knockout Shackles

Size (inch)	Safe working Load (tonnes)	Weight (Kg)
1 1/8	18	3.4
1 1/4	21	4.5
1 3/8	26	6.8
1 1/2	31	7.7
1 5/8	35	9.5



Guyline Shackles

Size (inch)	Safe working Load (tonnes)	Weight (Kg)
1 3/8	26	11.3
1 1/2	31	12.2
1 3/4	41	17.2



Double McGovern Hooks

Size	Ferrule Size	Weight (Kg)
Bantam	B4+B5+B6	6.8
Light	L6+L7+L8	17.7
Junior	J7+J8+J9+J10	20.4



Flush Pin Shackles

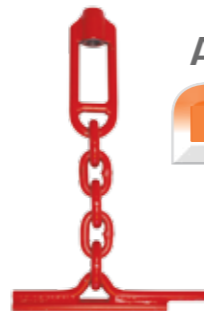
Size (inch)	Safe working Load (tonnes)	Weight (Kg)
1 1/8	16	1.6
1 1/4	18	2.7
1 3/8	21	3.2
1 1/2	26	4.1
1 5/8	31	5.0





Logging Toggles

Size (inch)	Weight (Kg)
5	1.8
7	3



ACME Toggles

For 5/8 - 3/4 rope

Hold-rite Hooks

Size	Mainline Rope size (inch)	Strop size (inch)	Weight (Kg)
Dwarf	3/4	5/8	1.8
Bantam	7/8	5/8, 3/4	2.9



Strawline Swivels

For 9, 10 & 11mm rope



Cast High Strength Rings

Internal diameter (mm)	Ring material width (mm)	Weight (Kg)
75	20	0.75
83	25	1.3
100	32	2.5

Forged High Strength Rings

Internal diameter (mm)	Ring material width (mm)	Weight (Kg)
75	20	0.75
80	25	1.4
90	30	1.9

Strawline Hooks

Standard	Arrowhead
3/8"	3/8"
7/16"	



Bullet Nose Buttons

Sizes		
1/2"	5/8"	3/4"

Pressed onto rope end



Choker Chain Hooks

Size (mm)	Grade	Safe Working Load (tonnes)	Weight (Kg)
8	G80	2.0	0.50
10	G80	3.2	0.95
13	G80	5.3	1.80
13	G100	6.5	1.85



Mainline Skidder Rings

Size (inch)	Suitable Rope Size (inch)	Weight (Kg)
5/8	5/8	0.5
3/4	3/4	0.9



Choker Strop Hooks

Size	Ideal strop size (inch)	Possible strop sizes (inch)	Ferrule Size	Weight (Kg)
Midget	1/2	3/8, 7/16, 9/16	M4	0.7
Dwarf	5/8	1/2, 9/16	LB5	1.5
Bantam	3/4	5/8, 1/2	B5+B6	1.8
Bantam lightweight	3/4	5/8, 1/2	B5+B6	1.2
Light	7/8	3/4, 1	L6+L7+L8	4.1
Light lightweight	7/8	3/4, 1	L6+L7+L8	2.5
Light junior	1	7/8, 1 1/8	LJ8+LJ9	5.2



Double-Ender Hooks

Size	Ferrule Size	Weight (kg)
Light	L6 - L7 - L8	4.5
Junior	J7 - J8 - J9 - J10	6.8



Line-Enders Hooks

Size	Mainline Rope size (inch)	Strop size (inch)	Weight (Kg)
Bantam/Midget	5/8	3/7, 7/16, 1/2, 9/16	1.8
Light/Dwarf	3/4, 7/8, 1	9/16, 5/8	2.3
Light/Bantam	3/4, 7/8, 1	5/8, 3/4	2.7

Ferrules



Colour	Ferrule Size	Rope diameter (inch)	Ferrule Diameter (inch)	Ferrule Length (inch)
Black	M4	1/2	1 1/8	1 1/4
White	D4	1/2	1 1/2	1 3/4
Pink	D5	9/16, 5/8	1 1/2	1 3/4
Purple	B5	5/8	1 5/8	2
Grey	B6	3/4	1 5/8	2
Black	L6	3/4	2 1/8	2 9/16
Black	L7	7/8	2 1/8	2 9/16
Green	L8	1	2 1/8	2 9/16
Yellow	J9	1 1/8	2 3/8	2 9/16
Orange	J10	1 1/4	2 3/8	2 9/16
Yellow	S11	1 3/8	2 3/4	3

Chain

Rigging and Choker Chain (G80)

Size (mm)	Safe Working Load (tonnes)	Weight (Kg)
8	2.0	1.4
10	3.15	2.2
13	5.3	3.7
16	8	5.6



Rigging and Choker Chain (G100)

Size (mm)	Safe Working Load (tonnes)	Weight (Kg)
8	2.5	1.7
10	4	2.6
13	6.5	4.5
16	10	6.6



Butt Rigging Chain (G80)

Size (mm)	Safe Working Load (tonnes)	Weight (Kg)
16	8.0	5.6
19	11.2	7.8
22	15.0	11.0
26	21.2	14.3
32	31.5	23.0



Stud Link Butt Rigging Chain

Size (mm)	Min Breaking Load (tonnes)	Weight (Kg)
25	37	14.2
32	58	22.3
34	70	26.9
42	97	37.0



Chain Joining Links

Size (mm)	Safe Working Load (tonnes)	Weight (Kg)
7	1.5	0.09
10	3.15	0.27
13	5.3	0.44
16	8.0	0.83



Rigging Accessories

Marlin Spikes

Sizes (Inch)
8, 10, 14, 16, 20, 24, 27



Felco Wire Rope Cutters

Sizes: C7, C9, C12, C16



Lashing Twine

440 metre



Wire Rope Lubricant

Specialist low viscosity lubricant, for penetrating through to the rope core.



Belray Gear Lubricant

12 pack, semi fluid hauler open gear lubricant



9" Replacement Cutting Disks



Morse Starret Wire Rope Cutter



Model	Max Rope Diameter (inch)
1	3/4
1A	1
2	1 1/4

Shindaiwa 9" Cut-Off Saw

Robust & Compact.
Can cut up to a 1 3/8" diameter wire rope.



Ferrule Punch

Model	Rope Diameter (inch)	Ferrule	No. of dies
Standard	5/8, 3/4	B5+B6	1
Large	5/8, 3/4, 7/8, 1	L6+L7+L8+B5+B6	2

Production Diary

Track key performance indicators for your cable logging crew



Wire Rope Socks

For pulling single or connected wire rope ends.

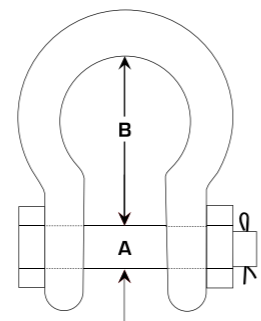


Green Pin Bow Shackle With Safety Bolt

MATERIAL: Bow and Pin - Grade 6 High Tensile Steel
SAFETY FACTOR: Minimum breaking load (MBL) = 6 x Working Load Limit (WLL)



Pin Diameter (mm)	Working Load Limit (tonnes)	Length inside (mm)	Weight (Kg)
13	1.5	43	0.22
16	2	51	0.42
19	3.25	64	0.74
22	4.75	76	1.18
25	6.5	83	1.77
28	8.5	95	2.58
32	9.5	108	3.66
35	12	115	4.91
38	13.5	135	6.54
42	17	146	8.19
50	25	178	14.22



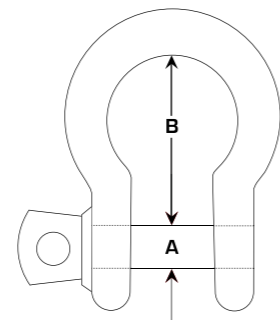
A - Pin Diameter (mm)
B - Length Inside (mm)



Green Pin Bow Shackle With Screw Collar Pin

MATERIAL: Bow and Pin - Grade 6 High Tensile Steel
SAFETY FACTOR: Minimum breaking load (MBL) = 6 x Working Load Limit (WLL)

Pin Diameter (mm)	Working Load Limit (tonnes)	Length inside (mm)	Weight (Kg)
13	1.5	43	0.19
16	2	51	0.36
19	3.25	64	0.63
22	4.75	76	1.01
25	6.5	83	1.5
28	8.5	95	2.21
32	9.5	108	3.16
35	12	115	4.31
38	13.5	135	5.55
42	17	146	7.43
50	25	178	12.84



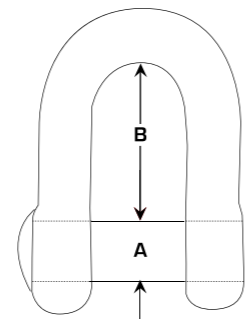
A - Pin Diameter (mm)
B - Length Inside (mm)



Green Pin Flushpin Dee Shackle

MATERIAL: Bow and Pin - Grade 6 High Tensile Steel
SAFETY FACTOR: Minimum breaking load (MBL) = 6 x Working Load Limit (WLL)

Pin Diameter (mm)	Working Load Limit (tonnes)	Length inside (mm)	Weight (Kg)
16	2	43	0.34
19	3.25	51	0.6
22	4.75	59	0.98
25	6.5	73	1.26
28	8.5	85	2.14
32	9.5	90	3.05
35	12	94	3.56
38	13.5	115	5.17
42	17	127	6.84



A - Pin Diameter (mm)
B - Length Inside (mm)

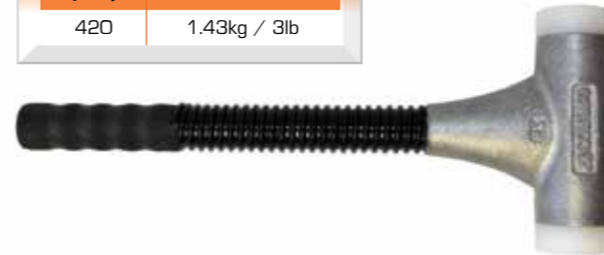


Logging Equipment

Scorpro Heavy Duty Wedge Hammer

Developed with the Logging Industry Research Association

Length (mm)	Weight
420	1.43kg / 3lb



Thorex Wedge Hammer

Length (mm)	Weight
305	1.25kg / 2.5lb



Splicing Hammer

Length (mm)	Weight
430	2.2kg / 5lb



Thorace Deadblow Wedge Hammer (For reduced rebound)

Length (mm)	Weight
330	1.4kg / 3lb



* Hammer faces also available.

Logging Tapes

15m Spencer Logging Tape
Refill Tape - 15m & 25m

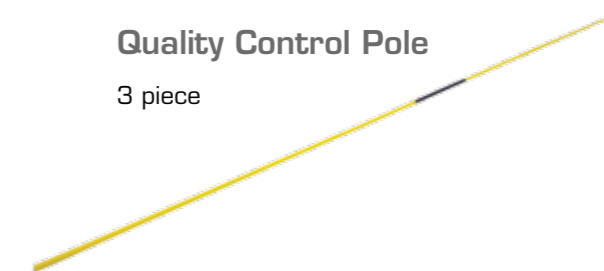


Logmaking Calipers



Quality Control Pole

3 piece



Jumbo Crayons

Blue or Black
10 crayons per pack



Plastic Wedges

Sizes (inch)
5 1/2
8
10
12



Timberline Pouches

Leather Pouch
Heavy duty model



Polyester Pouch
Light & water resistant



Radio Pouch

Heavy duty materials. Double stitched, zipped pocket.



Marking Paint

Full colour range
12 cans per box



Ink Marking Paint

12 cans per box. Reduced stencil blockage. Suitable for wet weather use.



Chain Bar Oil

20 Litre



300g Fire Extinguisher

Dry powder, perfect for fallers



Fire Extinguisher Bag

1000g Fire Extinguisher

Dry powder, perfect for vehicles



Hydration Backpack

3 Litre, zipped storage pockets



Scepter Fuel Container

6L Petrol/ 2.25L Bar Oil



Scepter Stop Flow Pourer

Avoid spillage and fuel contamination



Toucan

3L Petrol / 1L Oil



Scepter Transport Tank

53 Litre fuel capacity. Two shut off valves, breather cap, internal baffles, and strapping points.



UN & AS/NZ standards compliant.

Personal Protective Equipment

Full Helmet Assembly

HC600V, Pelter Grade 5 Earmuffs & visor



Neck Shield



Merinie

Breathable slimline Merino wool beanie. Can safely be worn under helmet.



Timberline Oilskin Jacket

Lined for extra warmth
S, M, L, XL, 2XL



Timberline Breaking-Out Leggings

Ripstop material, comes with belt



Arrestex & Endurance Chaps

S, M, L



Sqwincher

Replaces lost electrolytes, sugars, and mineral salts. 2 L concentrate makes up 20 L. Orange, Wildberry, & Lemon Lime.



High Vis Work Wear

Shaw's Breathable singlet (AS/NZS 4399 Compliant)
Shaw's Breathable Polo
Shaw's Cotton Tee Shirt



White Ox Gloves

Specialist logging gloves
12 pairs per pack



Fallers First Aid Kit

24 piece, with belt loop



5 Man First Aid Kit

57 piece, with belt loop





[NZ'S LOGGING
SUPPLY
SPECIALIST]



Boots



**VIBERG
BOOT**



Viberg Chokerman Boots

Specialist handcrafted logging boots.
 • Spiked model only.
 • Sizes: 7-13 (half sizes available)



Schoen 1100 Boots

Plain soled and Spiked
 • Sizes: 7-13

Lastrite Boots

Plain soled and Spiked
 • Sizes: 7-13



Skellerup Gumboots

Plain soled and Spiked
 • Sizes: 7-13

Bullie Gumboots

Chainsaw cut resistant
 • Plain soled and Spiked
 • Sizes: 7-13



Spikes

Steel and Tungsten
 • 60 spikes per pack



Bootcare

Proper boot care can potentially double the useful life of your boots.
 Stick to the Three Golden Rules:



Clean: Mud and dirt draws out the natural oil in leather.
 Try to brush clean at the end of each day.

Condition: Apply bootgrease or wax every few weeks to replace lost nutrients, and keep the leather supple and water resistant.

Careful Near Heat: Don't place your wet boots by the fire or heater (overheated leather will crack).
 Instead, stuff with newspaper, and leave to dry at room temperature.

Huberd's Boot Grease

To preserve and condition leather work boots.



Chainsaw Products



Chainsaw Chain



3/8" Superchisel & Semichisel available in 100 ft rolls, or spun into individual loops of your choice at no extra cost.

Factory spun loops (with no manual joins) available in 20", 22", 24", and 28" Superchisel.



Harvester Chain



3/4" & 404, available in 50 & 100 ft rolls respectively, or spun into individual loops of your choice at no extra cost.

Factory spun loops (with no manual joins) available in all common sizes.



Bars

Oregon Professional Power Match Chainsaw Bars

18 - 42" for Stihl & Husqvarna



Oregon Power Match Bar Tips

To suit all common sizes



Harvester - 404 Replacement Tips



Harvester Bars

Topping Bars

Harvester - 404 Windsor Solid Tip



Harvester - 404 Oregon Replaceable Tip



Mainsaw Bars

3/4" Oregon



3/4" Windsor



3/4" Replacement Tips



Round Files

- 7/32 Chainsaw
- 5/16 Harvester
- Other sizes also held in stock

Files

Flat Files

- Windsor
- Oregon



File Handle



Chain Accessories



Oregon Chain Spinner

- Standard



Oregon Chain Spinner

- Heavy Duty



Oregon Chain Breaker

- Standard



Oregon Chain Breaker

- Heavy Duty



Oregon Mechanical Grinder

For Saw and Harvester chain.
With a multi-fit or heavy duty 3/4" vice.



Bar spanners
To suit Stihl and Husky



Rim Sprocket
7 & 8 Tooth



Oregon Bar Vice



Transport

Ratchet Load Binder

Chain Size	Lashing Capacity
mm	Kg
10	4500
13	6700



Lever Load Binder

Chain Size	Lashing Capacity
mm	Kg
7.3	2300
8	3000
10	4500
13	6700



Topsaw Chainsaw Tool

9 piece - including bar spanner, bar cleaner and tuning screwdriver.



Depth Gauge

Sizes 3/8" and 3/4"



Stihl and Husky Bar Nuts



Twitching Bar

Heavy duty to suit Lever Load Binder



Heavy Duty Ratchet Tie Downs

9 m: 2.5 tonne lashing capacity.
6 m: 1 tonne lashing capacity.
6 m: 0.75 tonne lashing capacity.



Transport Short Link Grade 70

Hardened and tempered with Zinc Chromate finish.
Compliant with AS/ NZS 4344-2001

Chain Size	Lashing Capacity	Weight
mm	T	Kg/M
7.3	3	1.14
8	4	1.4
10	6	2.15
13	9	3.49



G70 Slip Hook

Chain Size	Lashing Capacity
mm	T
8	4
10	6



G70 Lug Links

Chain Size	Lashing Capacity
mm	T
8	4
10	6



G70 Grab Hook

Chain Size	Lashing Capacity
mm	T
8	4
10	6



Unilok Shackle

Pin Dia	Working Load Limit
	T
7	1.12
9	1.5
10	2.0
12	3.15
16	5.3
20	8.0
24	11.2
30	21.2



Chain & Lever Blocks



Capacity (tonnes)	Chain diameter (mm)	Chain falls	Effort to lift rated load (kg)	Weight (Kg)
0.5	5.0	1	24	10.5
1	6.3	1	29	12.5
2	7.1	1	36	21
3	8.0	2	36	36
5	9.0	2	39	42



Rated Load (tonnes)	Standard Lift (m)	Hand pull to lift full load (kg)	Weight (Kg)
0.8	1.5	29	6
1	1.5	36	6.2
1.6	1.5	34	8.3
2.5	1.5	37	11.6
3.2	1.5	37	16
6.3	1.5	38	27
9	1.5	39	42



Wellcup Wire Pull Winch (Tirfor Style)

Model	WPH 08	WPH 10	WH 32
Rated lift (WLL) (tonnes)	0.8	1.6	3.2
Rated pull (WLL) (tonnes)	1.3	2.6	5.2
Rope movement per stroke	52mm	55mm	28mm
Effort at rated load (kg)	29	40	45
Handle length (mm)	800	1120	1120
Weight (without rope - kg)	7.5	16	26
Rope diameter (mm)	8.5	11.5	16.5
Standard rope length (m)	20	20	20
Rope & collector weight (kg)	8	14	24



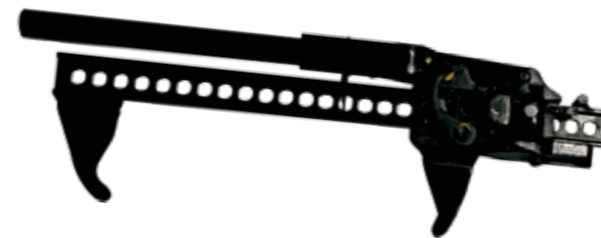
USA's No1 Skidder Chain.

BABAC Multiring®

Get more traction from your skidder

- Heavy Duty 3/4" hardened Boron Alloy Steel
- Smooth ride Multiring® design
- Excellent wear and break resistance

Sizes	Skidder Type	Weight (Kg)
35.5 x 32"	Large	562
30.5 x 32"	Standard	500
24.5 x 32"	Small	475



G200 Tightener

- Take the hassle out of tightening





The Worlds No 1 Forestry Track



Designed and manufactured in Sweden by Olofsfors – steelwork specialists since 1762.

The Ecotrack Advantage

- Increased traction, stability and load capacity
- Lower overall extraction cost per tonne.
- Less transmission shock loading (less spin and grab)
- Less wear on the machine and tyres.

Why are Tracks superior to Chains?

- Better traction
- Typically at least 2 x working life of chains
- Self cleaning – don't get clogged with mud.
- Very little retightening required.

Eco Track Skidder

Size	Skidder Type	Link Size	Weight (Kg)
30.5 x 32"	Standard	26mm	1450
35.5 x 32"	Large	26mm	1668



Eco Track Forwarder



Several models available, dependant on forwarder size, tyre specifications and ground conditions.


Part no.	Description	Tire Model
297 -653080	ECOTRACK 26 620/55 X 30.5	Trelleborg
297 -654000	ECOTRACK 26 750/55 X 26.5	Nokian ELS, FKF, TRS
297 -654030	ECOTRACK 26 750/55 X 26.5	Nokian FKF, TRS, c/c = 74" Tigercat
297 -654040	ECOTRACK 26 700/710 X 30.5	Trelleborg 423, 428
297 -654050	ECOTRACK 26 750/55 X 26.5	Nokian FKF, TRS, c/c = 75-78" Tigercat
297 -654060	ECOTRACK 26 750/45 X 30.5	Trelleborg 428
297 -656020	ECOTRACK 26 800 X 26.5	Nokian FKF, Trelleborg, Tianli





Logging Operations

Full assembly with Foldable Base.



Logging Operations

Full assembly with Driveable Stake.



Caution Sign

Reflective fluoro orange, aluminium construction, 750 x 750.



FITEC Banner

STOP
PROCEED ONLY
WHEN INSTRUCTED

CALL MEAD 23
ON CHANNEL 33

Comes with shock chord & ropes. 1200x750mm FITEC/DOL approved.



Road Closed Banner

ROAD CLOSED

Comes with shock chord & ropes. 1200x750mm FITEC/DOL approved.



Tree Felling Banner

TREE FELLING AHEAD

Comes with shock chord & ropes. 2950x550mm FITEC/DOL approved.



Primary Signs

Reflective, 750 x 750, aluminium construction.

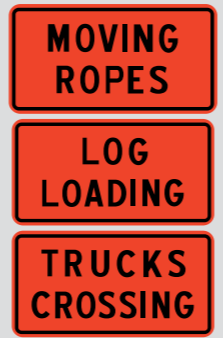


Supplementary Signs

LOGGING OPERATIONS

TREE FELLING

Reflective orange, aluminium construction, 950 x 500.




Supplementary Signs

MOVING ROPES

LOG LOADING

TRUCKS CROSSING

Supplementary Signs

OVERHEAD ROPES

PLEASE STOP ON REQUEST

LOGGING TRUCKS



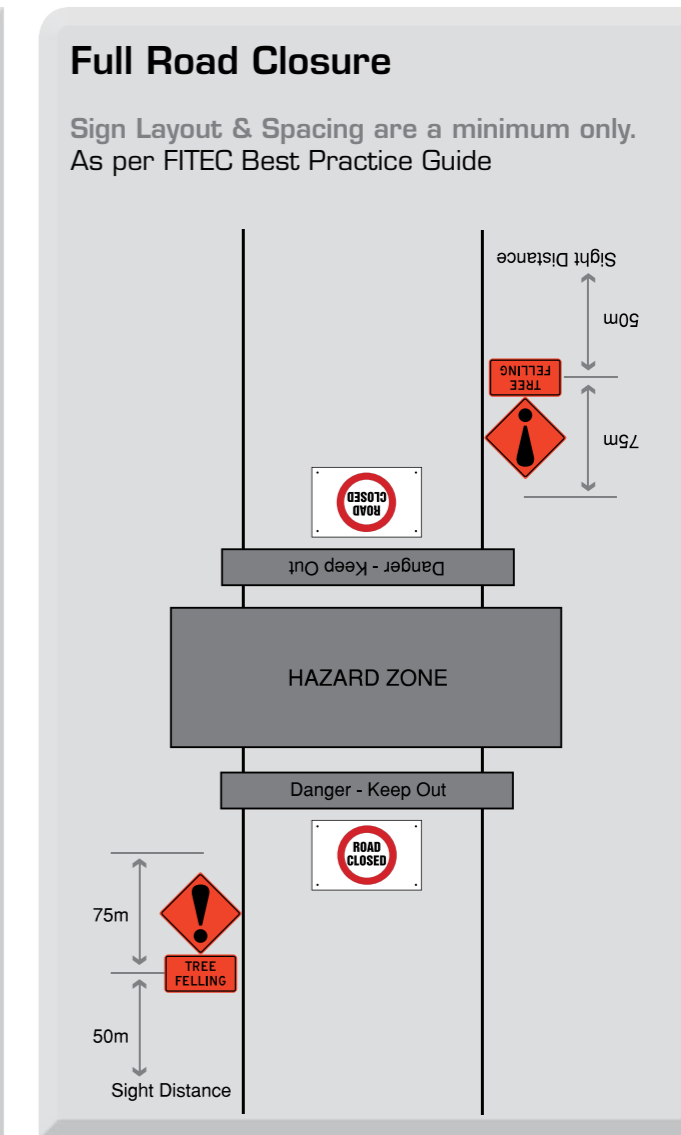
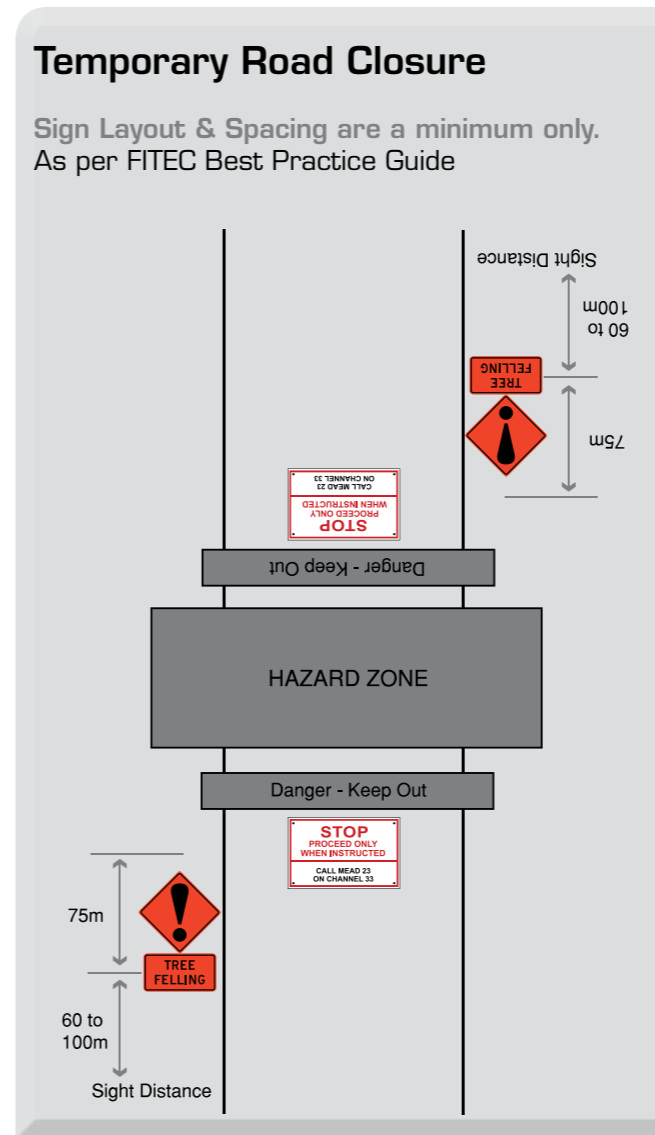
Multi Hazard Sign

Alloy construction, reflective finish, 800 x 1200mm. Steel mounting frame available.



Self Drivable Banner Holders

Self driving, no sledgehammer required. Heavy duty




Sign Stand
35mm zinc plated steel
To take primary & supplementary signs



Driveable Stake
21", 35mm steel.
Tough & robust



Safe Zone Banner
SAFE ZONE
SHARPEN & REFUEL HERE
Fluro Yellow 750x500mm



Foldable Base
35mm zinc plated steel
Folds down for easy transport



Stop/Go Sign
Double sided
1.6m handle



Road Cones
4.5 kg, 900mm,
NZTA spec.



Danger and Caution Tape
Barrier Film
75mm x 100m.

**With Over 400 Operating In The United States,
Kiwi Loggers Are Now Putting The Acme To Work.**

How Can An Acme Motorised Carriage Boost Your Production?

- Pull wider corridors - fewer line changes.
- Drags easier to land and unhook.
- Faster and cleaner breakout - more uplift and drag control.
- Able to clamp onto skyline and pull blind areas (avoid rocks & native bush)
- Versatile - perfect for Shotgunning and most Northbending country.
- Reduced overall running costs – less diesel use, and reduced hauler strain.
- Hauler operator maintains feel, as the hauler not the carriage does all inhaul pulling.

Advanced Options

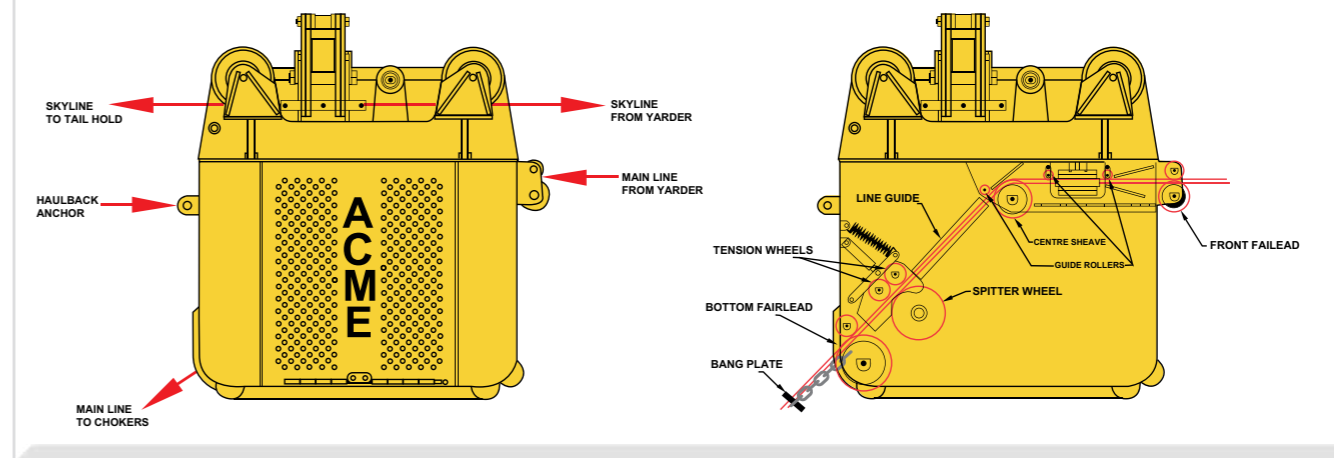
- Prestrop (if shotgunning with no live wires overhead).
- Rigged tailspars & intermediate supports, for greater lift.



Specifications

Light, tough, and reliable. The S28 model is powered by a fully enclosed 28hp Lombardini diesel engine, and is radio controlled via the Talkie Tooter system. The units feature a patented skyline clamp design with replaceable aluminium jaws, a hydraulic 3 speed adjustable slack puller (no gearbox or drive chain), dual throttles, and 10" semi Tommy Moore skyline sheaves.

Model	Hp (horsepower)	Weight Approx	Mainrope Sizes	Skyline Sizes	Skyline Sheaves	Line Speeds (Ft per Min.)	Load Capacity
S28	28	860kg	1/2" - 7/8"	3/4" - 1 3/8"	10" Semi Tommy Moore	Low: 150 - 450 Med: 150 - 450 High: 450 - 800	11,300kg
S28S	28	995kg	1/2" - 7/8"	3/4" - 1 3/8"	16" Tommy Moore	Low: 150 - 450 Med: 150 - 450 High: 450 - 800	11,300kg
S10	10	450kg	7/16" - 5/8"	9/16" - 1 1/8"	8" Semi Tommy Moore	200 - 385 FPM	5,400kg



LOG FASTER & SAFER WITH FORTRONICS



Why Do 100s Of Contractors Worldwide Use Fortronics Electronic Chokers?

Big Safety Improvements

No need for workers in the chute danger zone. All logs are released remotely by the hauler operator.

Reduced Operational Costs

Your poleman will spend at least 80% of his time working with the skid team, and no time waiting for the drag. Loaders spend more time on the deck processing, not wasting time at the chute.

Potential To Increase Production

With Fortronics an entire drag takes around 10 seconds to unhook. This time saving produces faster extraction cycles, and can help you to land more stems per day.

Versatility

Fortronics can unhook where a man cannot: high on stockpiles, in the steep mouth of the chute, with ropes moving around, and while the log is being moved with machinery.



What NZ Contractors Have to Say

"It's probably the best logging investment we've ever made. The poleman now spends 90% of his time helping to process. We pick up a couple of extra drags a day with the electronic chokers, and the whole operation runs far more smoothly. We were apprehensive at first, with cost and reliability concerns, but now there's no way we would go back to logging without them".

Mike & Jude Brolly, Brolly Logging

"The new chokers are streets ahead of the old ones. In terms of maintenance they are just awesome, put them on the rigging and almost forget about them. The new tracking system has improved considerably too".

Kerry McCormick, McCormick Logging Ltd

The Fortronics Generation II System

Tough, reliable, and simple to use. The new design builds on 18 years of product development, with extensive input from kiwi loggers.



- 1 Generation II Chokers (two sizes available)
- 2 Main Release Transmitter (Hauler Mounted)
- 3 Transmitter Aerial (Magnet Base)
- 4 Portable Release Transmitter
- 5 Choker Locator
- 6 Lithium Batteries
- 7 Lithium Grease
- 8 Spare Parts Kit

Unleash More Profit with Fortronics



World Leading Technology - Made here in NZ





Freephone 0800 4 SHAWS
or 07 823 4029
Fax: 07 823 4059



Email
sales@wireropes.co.nz



Website
www.wireropes.co.nz



Facebook
www.facebook.com/shawswireropes



Postal Address
P.O. Box 962, Cambridge,
3450, New Zealand



Physical Address
9 - 13 Albert Street, Cambridge,
3450, New Zealand

*"Opportunity is missed by most because it is dressed in overalls
and looks like work."*





**[NZ'S LOGGING
SUPPLY
SPECIALIST]**



0800 4 SHAWS



2013/2014

